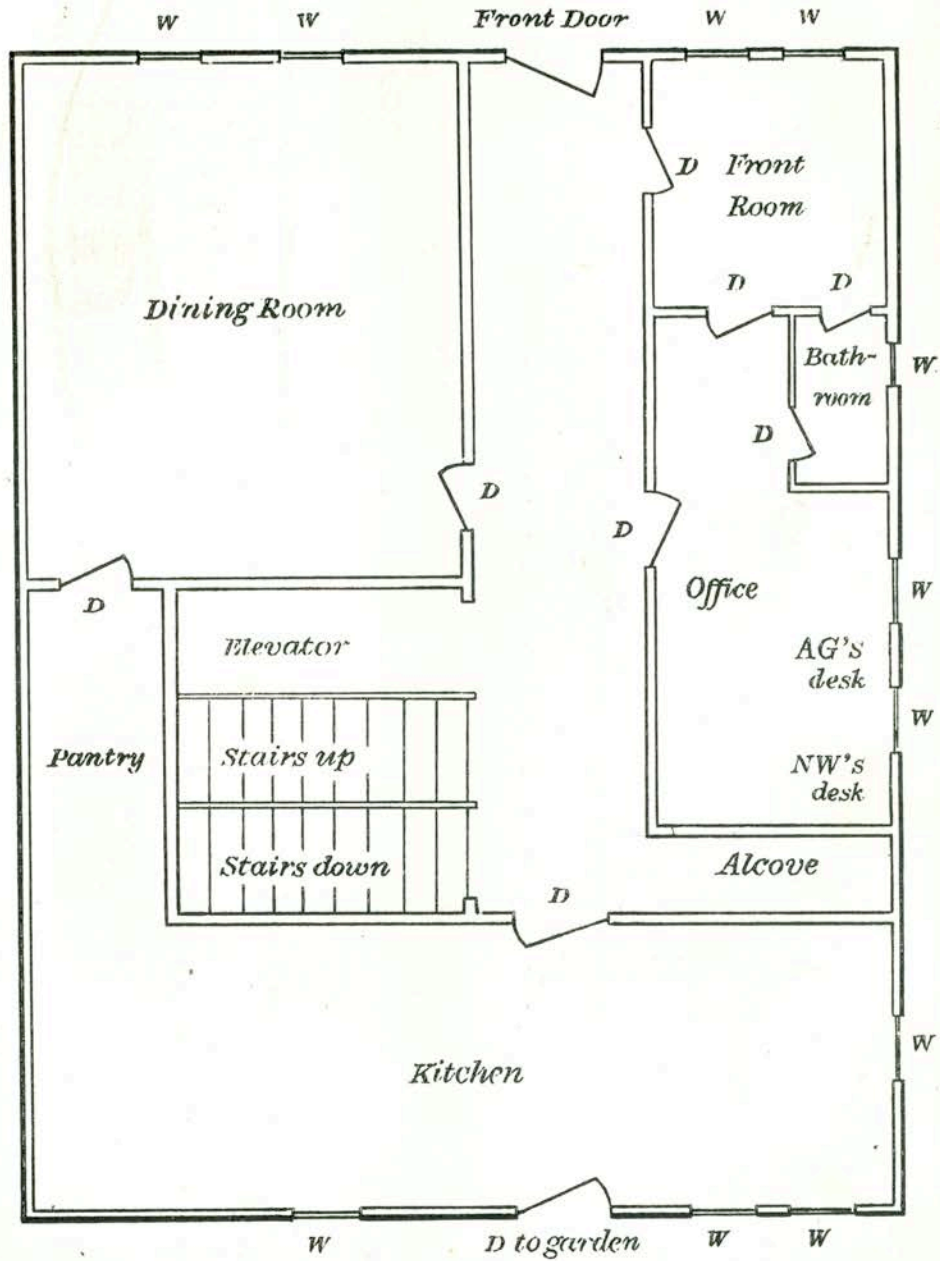
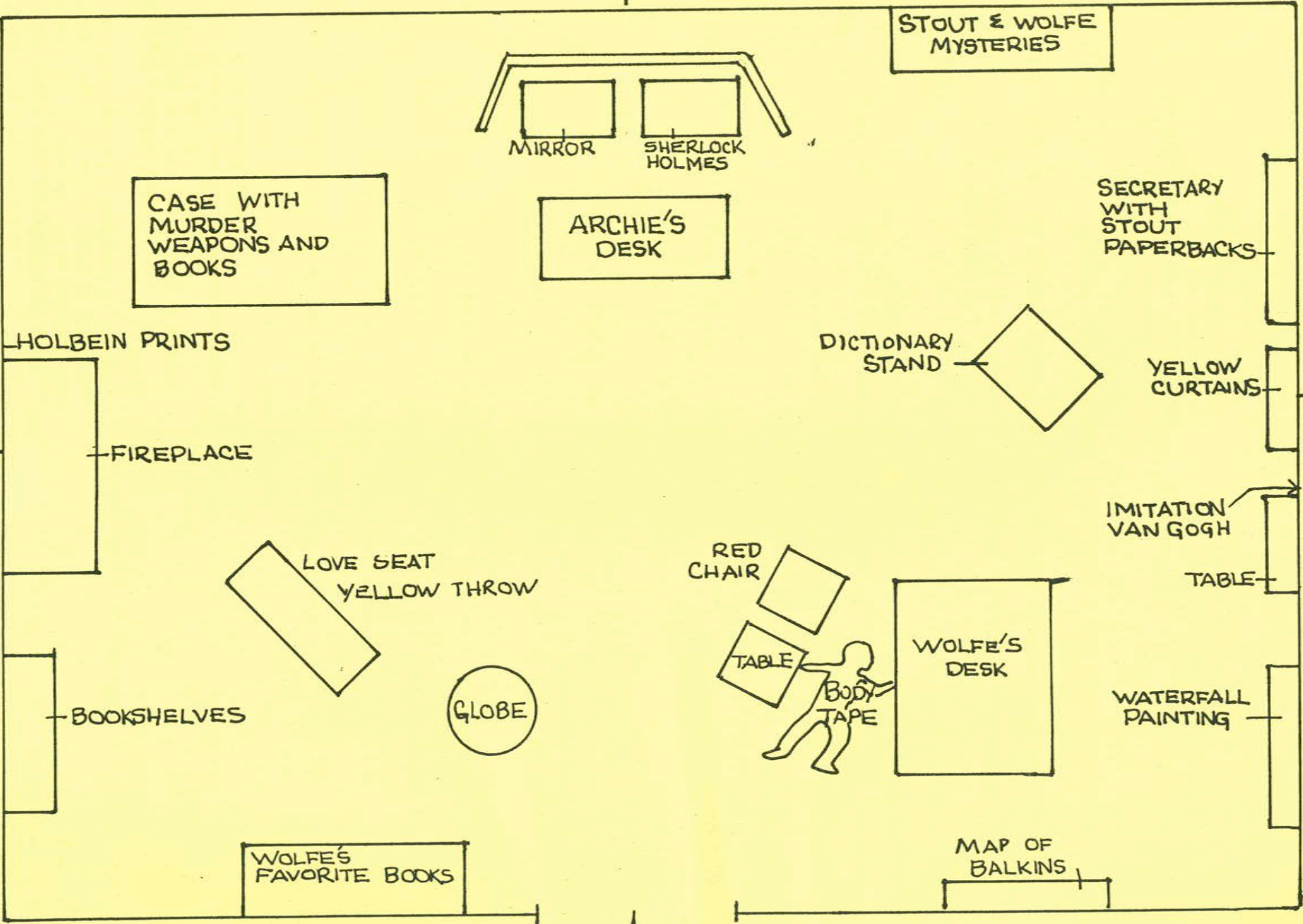


West Thirty-fifth Street



Ground Floor of Nero Wolfe's House



SE

S

W

1. TABLE BESIDE RED CHAIR IS USED PRIMARILY FOR CHECQUE WRITING BY CLIENTS.
2. BODY OUTLINE BELONGS TO BOYDEN MCNAIR (RED BOX , 1937) WHO WAS POISONED BY POTASSIUM COATED ASPIRIN IN WOLFE'S OFFICE.
3. WOLFE'S DESK
  - A) PAPER WEIGHT USED AS MURDER WEAPON
  - B) BLOCK OF PETRIFIED WOOD - MURDER WEAPON USED BY A MAN NAMED DUGAN.
  - C) ORCHID VASE
  - D) THE FALL BY CAMUS MARKED BY ONE OF WOLFE'S FAVORITE BOOKMARKS A COUNTERFEIT \$10 BILL.
  - E) HIS LETTER OPENER, A HORN HANDLED KNIFE, THROWN AT WOLFE IN CELLAR IN ALBANIA
  - F) HUNK OF CARVED EBONY, ONCE USED BY A MAN NAMED MORTIMER TO SMASH HIS WIFE'S SKULL
  - G. INSIDE TOP DRAWERS IS AN 18CARAT BOTTLE OPENER AND HIS WEEK'S SUPPLY OF BEER BOTTLE CAPS.
4. WOLFE'S DESK CHAIR IS DESIGNED TO HOLD A QUARTER OF A TON. ALTHOUGH WOLFE ONLY WEIGHS ONE SEVENTH OF A TON IN MOST OF THE BOOKS. THE CHAIR ITSELF IS MADE OF BRAZILIAN MAURO WOOD AND IS UPHOLSTERED IN BROWN LEATHER.
5. MAP OF THE BALKANS ----WOLFE'S BIRTHPLACE
6. WATERFALL PAINTING, PREVIOUSLY THE WASHINGTON MONUMENT, CONCEALS PEEP HOLE FOR WATCHING OFFICE.
7. OVER THE TABLE BEHIND THE DESK IS AN IMITATION VAN GOGH, REALLY DONE BY A MAN NAMED MCINTYRE.
8. DICTIONARY STAND HOLDS WEBSTER'S SECOND EDITION. WOLFE ONCE TORE UP AN ENTIRE COPY OF THE THIRD EDITION PAGE BY PAGE.
9. OVER ARCHIE'S DESK HANG A LARGE MIRROR ( AS HIS BACK IS TO THE DOOR, THIS ALLOWS HIM TO SEE THE WHOLE OFFICE) AND A PORTRAIT OF SHERLOCK HOLMES ( STOUT WAS A MEMBER OF THE BAKER STREET IRREGULARS).
10. THE LARGE GLOBE FIGURES PROMINENTLY IN MOST OF THE CASES. WHEN CONSIDERING A PROBLEM , WOLFE OFTEN REFERS TO IT, SPINS IT, AND " MAKES SURE THAT OMAHA IS STILL IN NEBRASKA ".
11. THE YELLOW USED IN VARIOUS MATERIALS IN THE OFFICE IS WOLFE'S FAVORITE COLOR.